



Rochester Intermodal Station

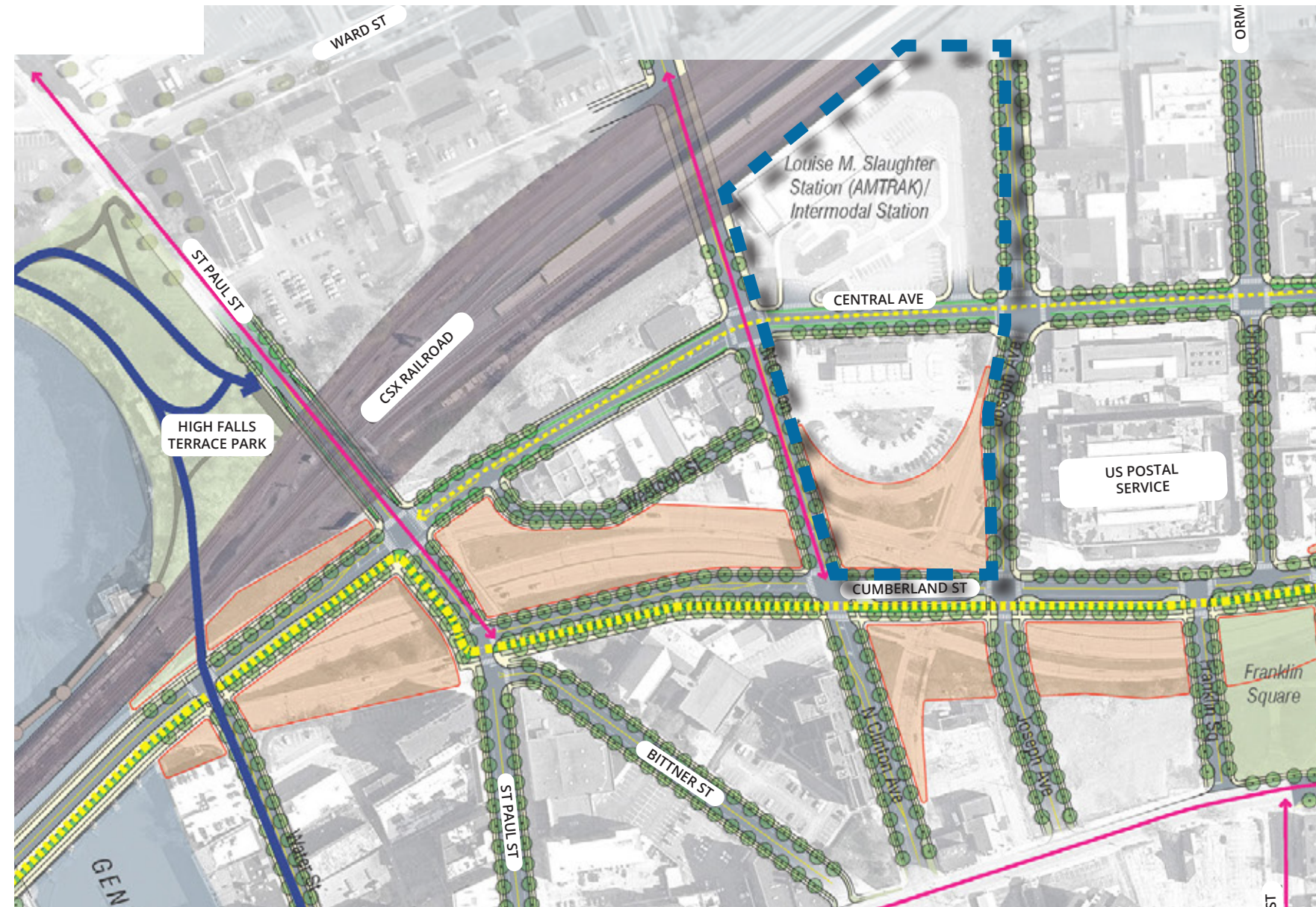
Expansion Concept | September 20, 2023



EXISTING SITE - CENTRAL AVE PHOTOS

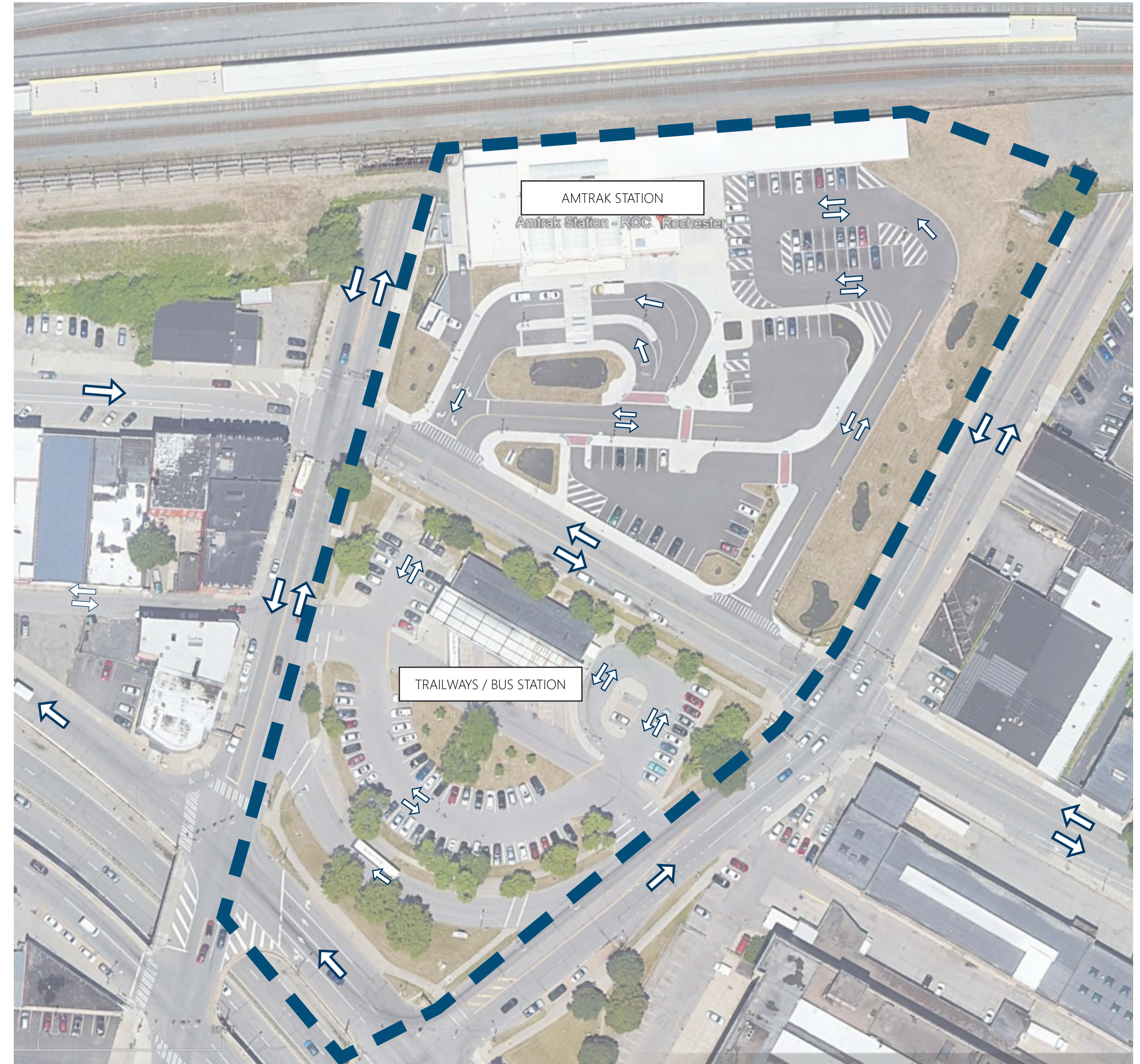


INNER LOOP NORTH PREFERRED DESIGN CONCEPT AND EXISTING STATIONS



INTERMODAL CONNECTIVITY | ROCHESTER, NY

- INNER LOOP LEGEND**
- GENESEE RIVERWAY TRAIL - EXISTING/UNDER DEVELOPMENT
 - INNER LOOP NORTH/EAST BICYCLE FACILITY - EXISTING
 - INNER LOOP NORTH/EAST BICYCLE FACILITY - PROPOSED
 - CITY BICYCLE NETWORK - EXISTING
 - CITY BICYCLE NETWORK - PROPOSED
 - POTENTIAL REDEVELOPMENT SPACE
 - GREEN SPACE



EXISTING SITE PLAN

CONCEPT FOR COMPLETION OF INTERMODAL STATION



CONCEPT SITE PLAN



ENLARGED CONCEPT SITE PLAN



ENTRANCE
 establish a central pedestrian corridor orienting the visitor directly to the station along the street with a central plaza and statue

STATION EXTENSION
 construct a station extension through building and canopy to support inter-city bus and rideshare users, complementing the existing station building

BUS LOOP
 relocates and separates bus from other traffic

PARKING
 support travelers with adequate parking spaces and ADA compliant spaces

PARK
 incorporate greenspace within building masses to enhance quality of life through recreation, air quality, and water quality

BLOCK DEFINITION
 establish buildings at the corners of blocks to define the character and edge of the streetscape

ACTIVE TRANSPORTATION
 incorporate bike lanes, storage facilities, e-bike facilities, crosswalks, and connective paths to improve access for multiple modes of transportation

STREETSCAPE
 incorporate street trees, lighting, and amenities along the street to enhance the pedestrian experience, complement the uses, calm traffic, and improve connectivity

MIXED USE
 infill multi-use buildings with first floor commercial and multi-story residential above with bike parking, for natural surveillance, 24-hour activity, and accommodation

SCHEMATIC CONCEPT

AXONOMETRIC

SCHEMATIC CONCEPT



VIEW OF STATION ADDITION

SCHEMATIC CONCEPT



VIEW OF PROPOSED PARK

SCHEMATIC CONCEPT



VIEW OF CENTRAL AVE. (FACING EAST FROM STATION ENTRANCE)

Development opportunities

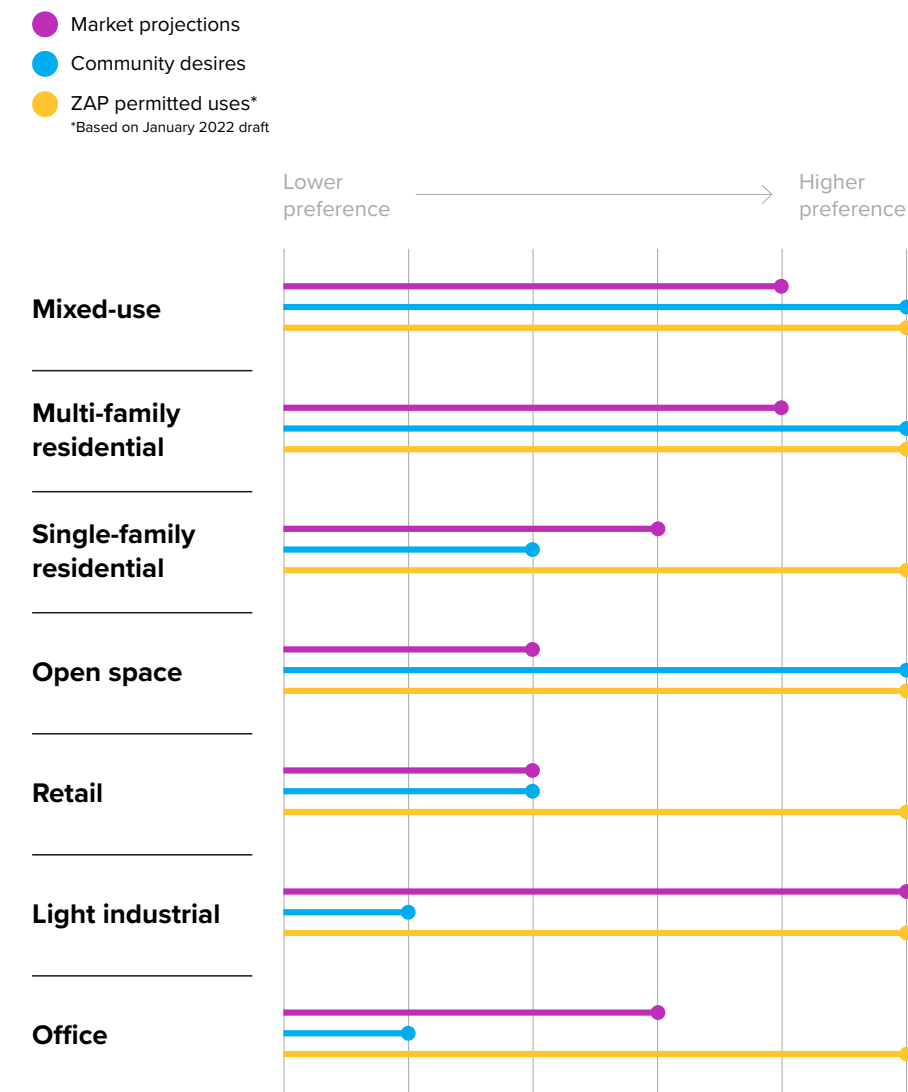
Central segment

In the central segment of the Inner Loop North corridor, several new development sites will front the newly-created Cumberland Street. Potential exists in this emerging district to encourage mixed-use development and a vibrant pedestrian realm.

The central segment is arguably the segment that can be viewed most as a “blank slate” since, throughout almost the entire extent of this segment, the newly created street is fronted by new development sites. This creates significant potential to direct development in a way that fosters the kind of mixed-use, walkable corridor that the re-designed Inner Loop is envisioned as. Feasible new uses include mixed-use and multi-family residential as well as light industrial.

Community members expressed desire to see additional public realm improvements in this area, particularly streetscape enhancements and enhanced bicycle and pedestrian connectivity. Enhancements at and the potential expansion of Franklin Square are also opportunities unique to this segment – as is multi-modal, transportation-oriented development that leverages the Train Station and proximity to the RTS Transit Center.

Overlap of feasible, permitted, and community-desired uses



Development type*

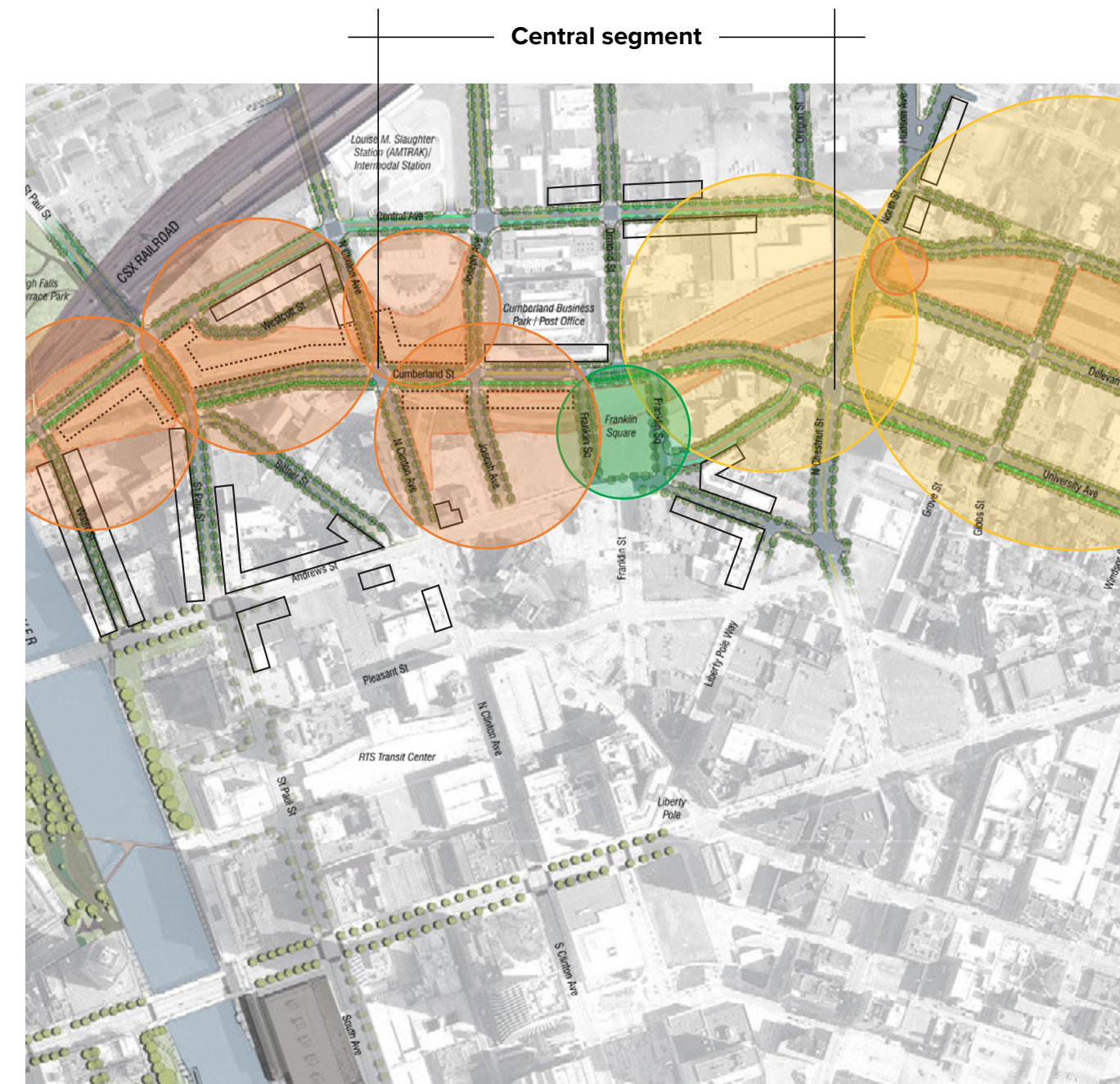
- 3 acres developable land
- 2-4 stories medium density

Best uses*

- mixed-use
- multi-family residential

Other opportunities*

- street-scaping
- bike/ped connectivity



*Based on community input.
**Based on visual preference survey.

Representative bulk and density**



- Mixed-use recommended
- Residential recommended
- Green space recommended
- Existing built forms that can support first-floor activity
- New areas to encourage first-floor activity**
- ***Building footprint subject to change